



QUARTER 7
PIP 1.1.3 (A)
Rural

PIP Item 1.1.3 (A) Rural Region

Develop a training plan for the completion of the safety training plan for staff development on implementation of the safety assessment model including: Safety Plan Development; linking case plan activities to identified service needs to address safety concerns; developing staff experts and mentors; develop supervisory knowledge and skills in safety consultations; and provide stakeholder orientation on Nevada's Safety Assessment for Staff development.

SAFE-New Model Trainings 2011-2012

Intake Assessment Training		
Training focused on the need to gather sufficient information at intake and to analyze that information in order to make an appropriate Intake screening decision. Training held jointly for all Washoe and DCFS staff.		
August 8-9, 2011		WCDSS
August 8-9, 2011		Redfield
August 9-10, 2011		WCDSS
August 9-10, 2011		Redfield
August 11-12, 2011		WCDSS
December 15-16, 2011		WCDSS

SAFE Model Training (Rural locations only)		
Intake and Nevada Initial Assessment (NIA) Information Collection and Decision Making: A Component in the Safety Intervention System (safety plan development included)		
August 29-September 2, 2011		Fallon
September 12-16, 2011		Elko
September 19-23, 2011		Pahrump

SAFE Model Training		
Nevada Initial Assessment (NIA) Information Collection and Decision Making: A Component in the Safety Intervention System (safety plan development included)		
August 29-September 1, 2011		Reno
September 20-23, 2011		Reno
September 27-30, 2011		Reno
October 24-27, 2011		Reno
November 7-10, 2011		Reno

DCFS Nevada Program Improvement Plan & Stakeholder Orientation to SAFE Model		
Implementing a Comprehensive Assessment Safety Intervention Process		
September 7, 2011		Nye County
September 19, 2011		Douglas County
September 20, 2011		Carson City
September 21, 2011		Fernley
September 21, 2011		Lyon County
September 26, 2011		Humboldt County
September 26, 2011		Lander County
September 27, 2011		Elko County
September 27, 2011		White Pine County

Conditions for Return		
Training focused on skill building for workers and supervisors to learn how to assess when conditions of return have been met so that children can be safely returned home while safety and case plan services continue in an effort to eliminate impending danger safety factors. Training held jointly for all Washoe and DCFS staff.		
November 29-December 1, 2011		Reno
December 6-9 & 13, 2011		Reno

Consultative Supervision		
Training focused on evaluating and managing effective safety Intervention from Intake through reunification.		
March 26-27, 2012		Reno
March 28-29, 2012		Reno
April 3-4, 2012		Reno

Confirming Safe Environment (CSE)		
CSE refers to an assessment of four categories within placement families/homes which contains indicators of a safe placement environment. The four categories are evaluated by 11 kin placement assessment questions and 10 foster placement assessment questions.		
Trainings to be completed by May 31, 2012		
TBD		TBD

Protective Capacity Family Assessment (PCFA)		
The PCFA represents the first essential ongoing CPS intervention with families where children have been identified as unsafe. The PCFA provides ongoing workers with a structured approach for engaging and involving caregivers and children in the case planning process.		
Trainings to be completed by September 29, 2012		
July		TBD
August		TBD

Protective Capacity Program Assessment (PCPA)		
PCPA is a formal decision making point in the safety intervention process, which requires involvement from caregivers and children; Family Case Plan Service providers; and safety service providers. Purpose is to measure case plan progress toward achieving progress associated with enhancing diminished caregiver protective capacities, re-evaluating status of impending danger and analyze sufficiency of safety plans, adjust safety plans to least intrusive manner when appropriate and Re-evaluate the status of children's needs.		
Trainings to be completed by November 1, 2012		
September		
October		

Implementation Team Meetings		
The Implementation team (IT) is comprised of CPS workers, supervisors and managers and Quality Assurance staff. Approximately 15-20 staff participate consistently. The IT meets biweekly for approx 2 hours to discuss a variety of issues pertaining to the roll out of the new SAFE model. Everyone is encouraged to bring forth agenda items for discussion and cases for peer review. Policies are reviewed, 72 hr letter for protective custody was revised to be in alignment with new SAFE practice model, case scenarios presented for discussion, trainings are debriefed, barriers to windows in UNITY are identified and problem solved and peer review of existing NIA's and safety plans occurs. This meeting has been very well received. Staff participation has exceeded my expectations.		

Session 1

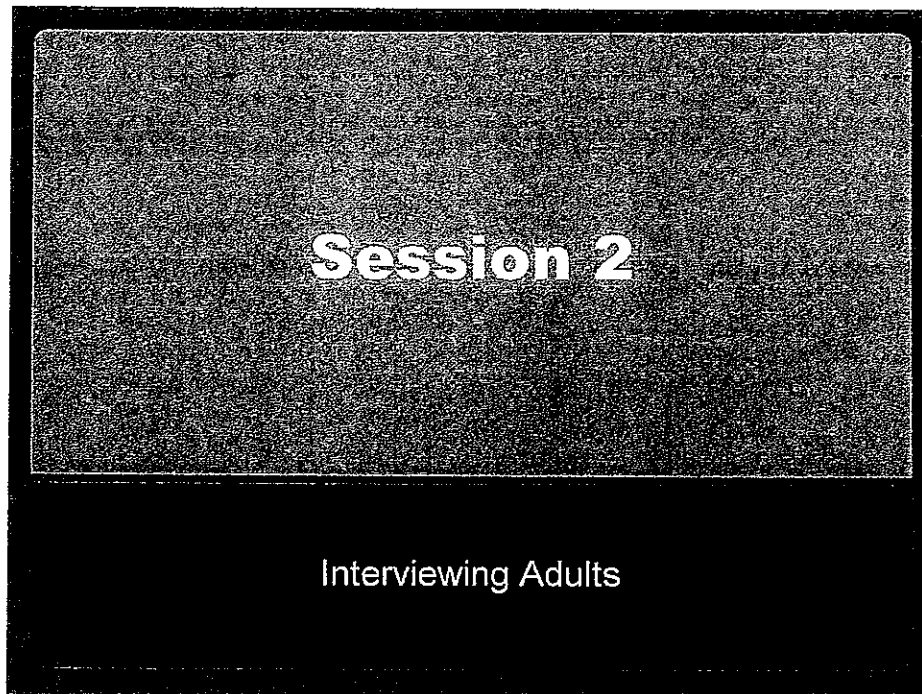
Preliminaries and Present Danger and Present Danger Plans

Estimated Time 165 Minutes (9:00 – 12:00) Day 1

Order/overview

- | | |
|---|------------|
| 1. Introductions | 5 minutes |
| 2. Introduction to Training | 5 minutes |
| 3. NIA Driving Concepts | 10 minutes |
| 4. NIA Training Objectives | 5 minutes |
| 5. What's Different? | 5 minutes |
| 6. Preview of Instruments | 10 minutes |
| 7. Agenda | 5 minutes |
| 8. Present Danger | 10 minutes |
| 9. Key Points about Present Danger | 5 minutes |
| 10. Exercise: Identify Present Danger | 45 minutes |
| 11. The Present Danger Plan | 5 minutes |
| 12. Present Danger Plan Options | 5 minutes |
| 13. Process for Developing Sufficient Present
Danger Plans | 10 minutes |
| 14. Present Danger Plans and Caregiver
Protective Capacity | 5 minutes |

- | | |
|---|------------|
| 15. Assessing Caregiver Protective Capacity | 5 minutes |
| 16. Creating a Sufficient Present Danger Plan | 30 minutes |



Day 1

Estimated Time 165 Minutes (1:00 – 4:00)

Order/overview

- | | |
|--|------------|
| 1. Objectives | 5 minutes |
| 2. Conversation Approaches | 20 minutes |
| 3. Core Interpersonal Techniques | 60 minutes |
| 4. Simple But Meaningful Topics | 5 minutes |
| 5. Interviewing Adult Caregivers about Child Functioning | 30 minutes |
| 8. Interviewing Caregiver Adults about Parenting and Discipline | 45 minutes |
| 9. Interviewing Adult Caregivers about Adult Functioning (Assessing Caregiver Protective Capacities) | 30 minutes |

Session 3

Information Standards

Day 2

Estimated Time 170 Minutes (9:00 – Noon)

Order/overview

- | | |
|------------------------------|------------|
| 1. Objectives | 5 minutes |
| 2. NIA Information Standard- | 90 minutes |
| 3. Case Critique Exercise | 75 minutes |

Session 4

Assessing Information and Judging Level of Sufficiency

Day 2

Estimated Time 180 minutes (1:00 – 4:00)

Order/overview

- | | |
|----------------------------------|------------|
| 1. Objectives | 5 minutes |
| 2. Grade a Case | 35 minutes |
| 3. Assessing Overview/Definition | 35 minutes |
| 4. Break | 15 minutes |
| 5. Steps of Assessing- #3 | 30 minutes |
| 6. Steps of Assessing- #4 | 60 minutes |

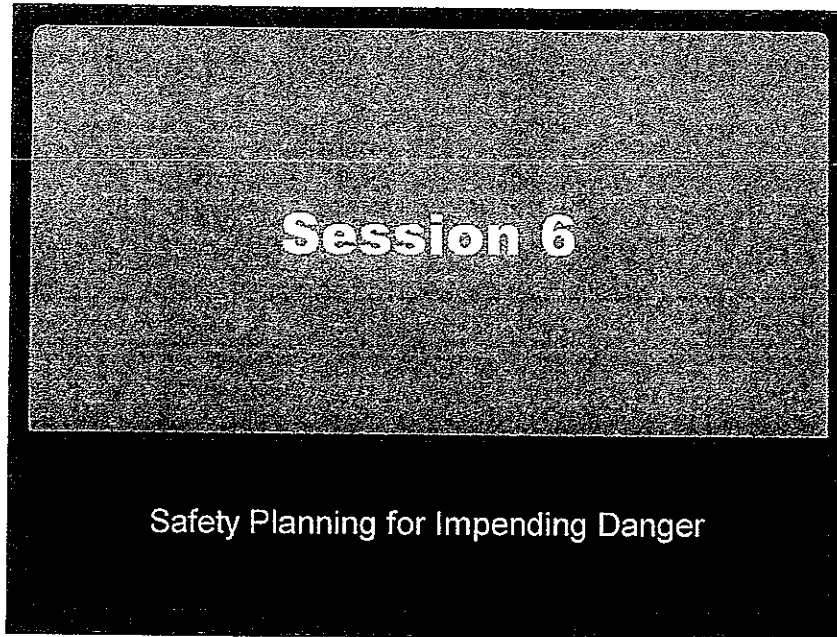
Session 5

Safety Assessment for Impending Danger

Estimated Time 180 Minutes (1:00 – 4:00)

Order/overview

Objectives	5 minutes
1. Defining Essential Safety Concepts	40 minutes
2. Matching Family Conditions Exercise	75 minutes
3. Break	15 minutes
4. Safety Assessment Exercise- Jennifer	45 minutes



Day 3 and 4

Day 3 (1:00 – 4:00)

Day 4 (9:00 – Noon)

Order/overview

- | | |
|---|-------------|
| 1. Session Objectives | 3 minutes |
| 2. What is a Safety Plan? | 12 minutes |
| 3. Handout/discussion - Safety Intervention
and Civil Rights | 25 minutes |
| 4. Presentation - How to Develop a Safety Plan | 160 minutes |
| 5. Exercise - Safety Services and Scenarios | 45 minutes |
| 6. Exercise - The Wilson Family | 90 minutes |

*Washoe County Department of Social Services (WCDSS)
And
Nevada Division of Children and Family Services (DCFS)*

**Nevada Initial Assessment Information
Collection and Decision Making**

A Component in the Safety Intervention System

Prepared and Delivered by

ACTION for Child Protection, Inc.
2101 Sardis Road North
Suite 204
Charlotte, NC 28227

Phone: 704/845-2121

Fax: 704/845-8577

Web Address: www.actionchildprotection.org

August 2011

The content in this booklet is taken from the original work of ACTION for Child Protection. Permission to use these materials is given solely to the *Washoe County Department of Social Services (WCDSS) and Nevada Division of Children and Family Services (DCFS)*.

Contents

1	<i>Preliminaries and Present Danger and Present Danger Plans</i>	
	Introduction to Training	2
	NIA Driving Concepts	2
	NIA Training Objectives	3
	What's Different?	3
	Preview of Revised Instruments	4
	Present Danger Assessment	5
	Present Danger Plan	7
	NIA with Safety Assessment and Conclusion	9
	Safety Plan Determination	15
	Safety Plan	17
	Agenda	19
	Present Danger Definition	20
	The Conceptual Framework for Present Danger	21
	Key Points about Present Danger!!!	29
	Exercise – Identifying Present Danger Using Criteria	30
	The Present Danger Plan	35
	Present Danger Plan Options	35
	Process for Developing Sufficient Present Danger Plans	36
	The Process for Present Danger Plan Sufficiency	37
	Present Danger Plans and Caregiver Protective Capacity (CPC)	40
	Caregiver Protective Capacity Definition	40
	Assessing Caregiver Protective Capacities	41
	Exercise: Creating a Sufficient Present Danger Plan	42
2	<i>Interviewing Adults</i>	
	Session 2 Objectives	47
	Conversation Approaches	47
	Three Conversation Approaches	48
	Core Techniques for Deliberate Information Gathering	53
	Interviewing the Adult Caregiver: simple topics 4 use in NIA	56
	Interviewing Adult Caregivers about Child Functioning	56
	Analysis of Caregiver Conversation about Child Functioning	57
	Interviewing Caregiver Adults about Parenting and Discipline	58

	Parenting General and Discipline: Relevant Content	59
	Information about Parenting and Discipline: the level of sufficiency	60
	Interviewing Adult Caregivers about Adult Functioning: Assessing Caregiver Protection Capacities Worksheet	62
3	<i>Information Standards</i>	
	Session 3 Objectives	65
	NIA Information Standards: 6 assessment questions	65
	Nevada Initial Assessment Information Standards	66
	Categorizing Exercise	68
	Categorizing Pertinent Information Worksheet	69
	What You Need to Know and Understand about a Family!!!!	70
	Case Critique: The Paul Family Exercise	71
4	<i>Assessing Information and Judging Level of Sufficiency</i>	
	Session 4 Objectives	76
	...Quality...Sufficiency...Information that Supports Decision Making: Judging the Ward Case	76
	The Ward Family NIA	77
	Judging the Ward Case Worksheet	84
	Assessing vs. Assessment	85
	Behavior, Significance, Category of Study	86
	Purposes for Assessing	90
	Five Steps for Assessing	90
	Steps in Assessing 1. and 2.	91
	Steps in Assessing 3.	92
	Judging Sufficiency of Information and Level of Effort Worksheet	93
	Steps in Assessing 4.: a reading	97
	Reading: Analyzing Variation in Family Conditions and Implications for Assessing Child Safety	98
	Steps in Assessing 4.: an exercise	103
5	<i>Safety Assessment for Impending Danger</i>	
	Session 5 Objectives	106
	A Safe Child	106
	An Unsafe Child	107
	Impending Danger	107
	Caregiver Protective Capacities (CPC)	108

Behavioral Protective Capacity Definition	108
Cognitive Protective Capacity Definition	109
Emotional Protective Capacity Definition	109
Caregiver Protective Capacity Reference Sheet	110
Family Conditions Continuum	120
Safety Threshold Criteria	120
Safety Threshold Criteria (continued)	121
Family Conditions	121
Family Conditions...Safety Threshold Criteria...Impending Danger Threats? an exercise (Part A and Part B)	123
Exercise – Connecting Initial Assessment Information to Safety Threats and Caregiver Protective Capacities	128
Exercise – Safety Assessment for Impending Danger (Jennifer Case)	132
6 <i>Safety Planning and the Safety Plan Determination</i>	
Session 6 Objectives	138
Three Plans – Not the Same	138
What is a Safety Plan?	139
Continuum of Safety Management Options	140
Criteria for Any Safety Plan Option	140
The Range of Tasks for Effective Safety Planning	141
Reading: Safety Intervention and Civil Rights	142
Developing Sufficient Safety Plans	148
Definition of Safety Plan Determination	148
Definition of Safety Plan Determination Analysis	149
SPD Purposes & Objectives	149
SPD Requirements & Decisions	150
Safety Plan Determination: Process and Conclusions	151
A Dynamic Context: the circumstances that exist when the SPD occurs	153
Dynamic Context: a visual	153
Getting To and Through the SDM Process	155
The Timing of SPD Home Visits or SPD Meeting	156
Content for SPD Home Visits and Meetings	157
Safety Services vs. Case Plan Services	159
Safety Management Categories	159
Group Exercise: TAKING ACTION! In-Home Safety Management	160
Safety Service Providers: judging suitability	164
Why Judge the Suitability of Safety Providers?	164

Handout: Criteria and the Know How to Judge Provider Suitability	166
The Wilson Family: Safety Plan Exercise	170
Wilson Intake Assessment	171
Wilson Nevada Initial Assessment	174
Wilson Safety Plan Determination	184
Wilson Safety Plan	186
Adjourn	190